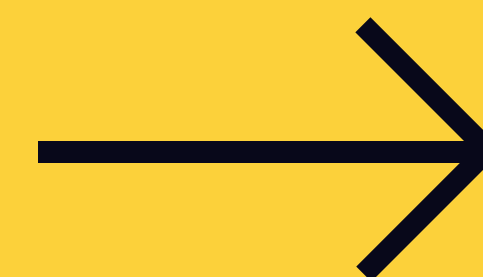
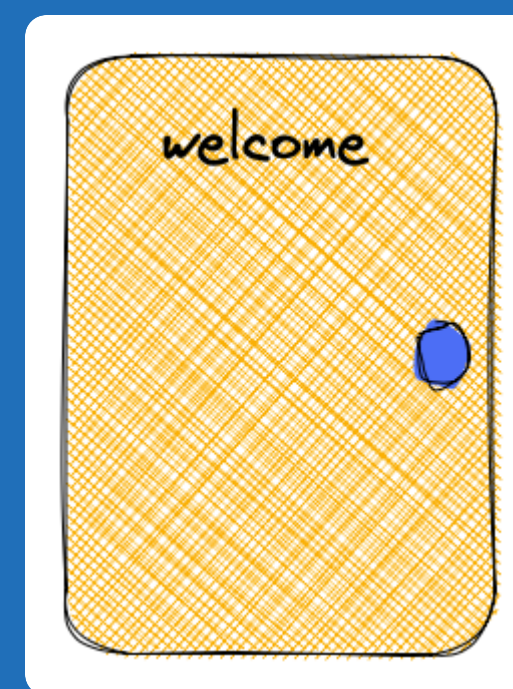


**Inclusive Design:
Seeing Health
Care From the
Patient's
Perspective**



Inclusive Design: Seeing Health Care From the Patient's Perspective



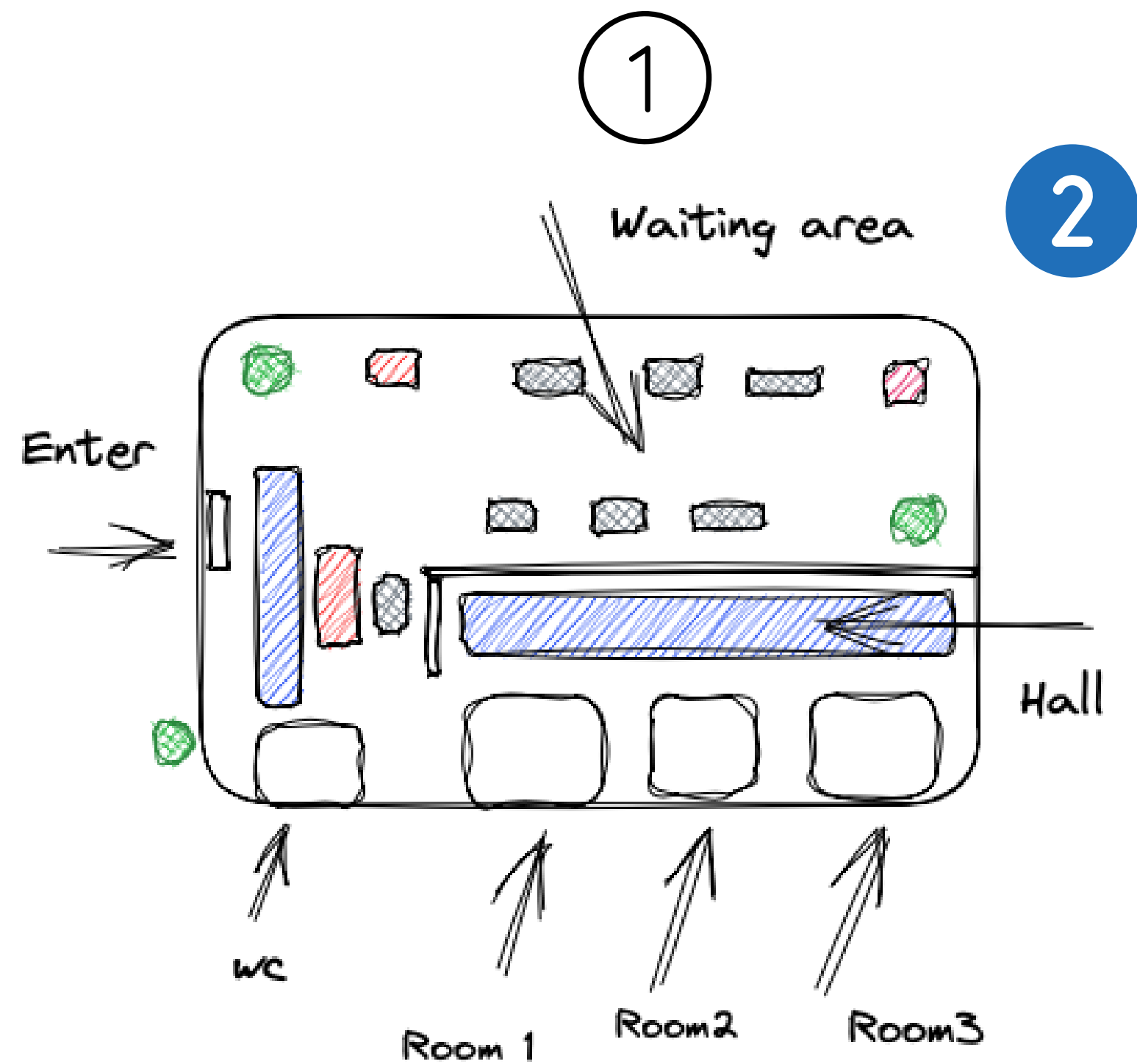
FRAME

FOCUS: How can health providers integrate the values of DEI and inclusive design into their clinical environments?

- How do patients navigate clinical environments
- How does a clinical environment create barriers to access for certain patients or make others feel excluded?
- How can a provider create clinical environments that are inclusive and accessible to a wide range of patients?
- How can a provider learn more about DEI, inclusive design, and their importance to clinical environments?
- How can providers include patients in the design of their clinical environments?

FRAME

What's this about?



Inclusive Design

③

④

⑤

Refers to an approach to health care design focused on creating environments, services, products, and experiences that are **safe, equitable, and inclusive**.

Keywords: *physical space, care, health experience*

SENSE

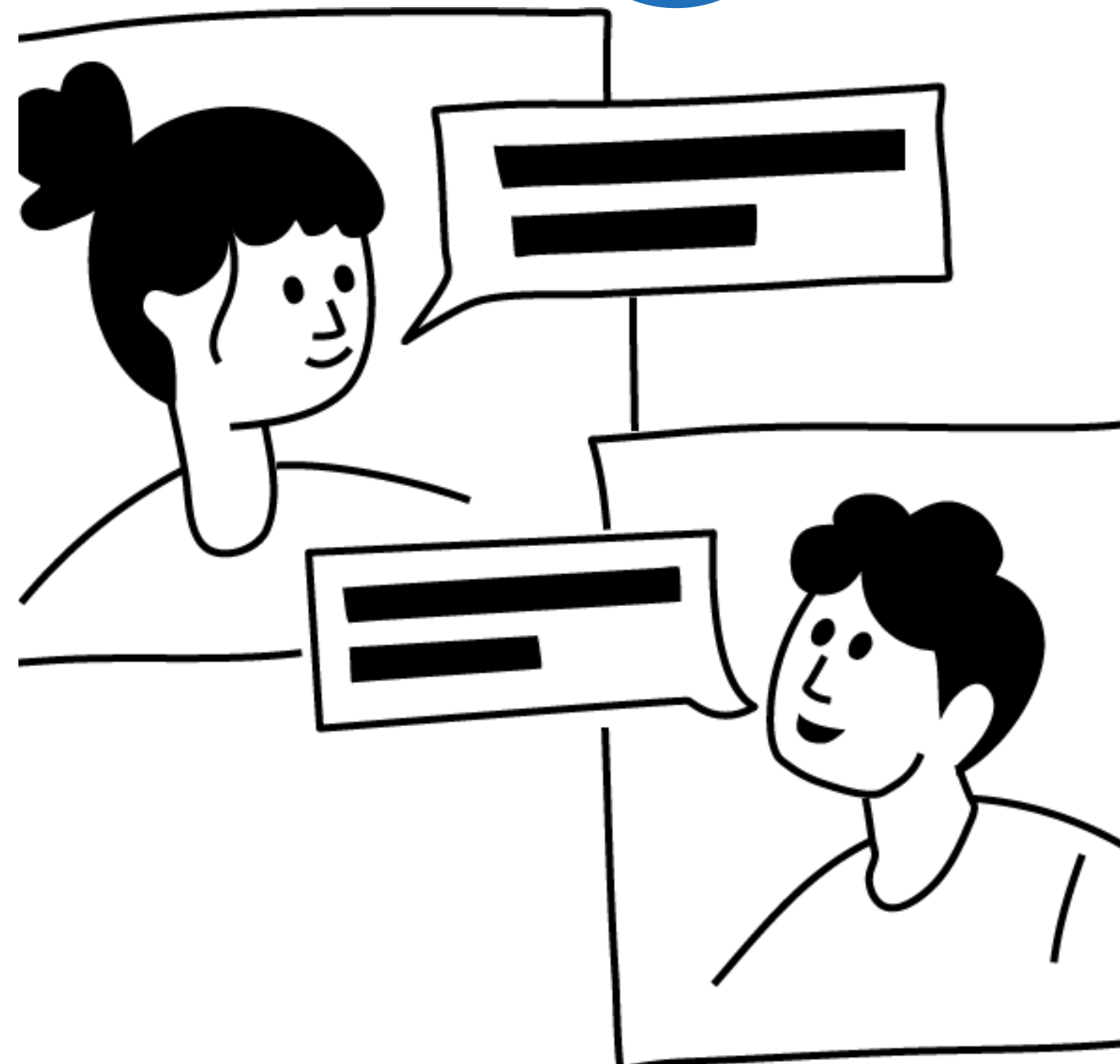
1

3

4

5

2



Courtney: Are there ways the clinical environment made you feel included or excluded? For your last visit

Max: Ok great. Yeah there's a few ways it made me feel both

Courtney: Can you tell me about it?

Max: Ok so I'm in physical therapy for a torn meniscus and I use a cane currently. It's a bit difficult to enter the doorway (ground floor though) while using my cane and feels awkward from the start.

Courtney: Ah yes that makes sense!

Max: The bathroom also does not have any hooks or anything you hang the cane from and it's frustrating to find a way to keep it upright

MAKE

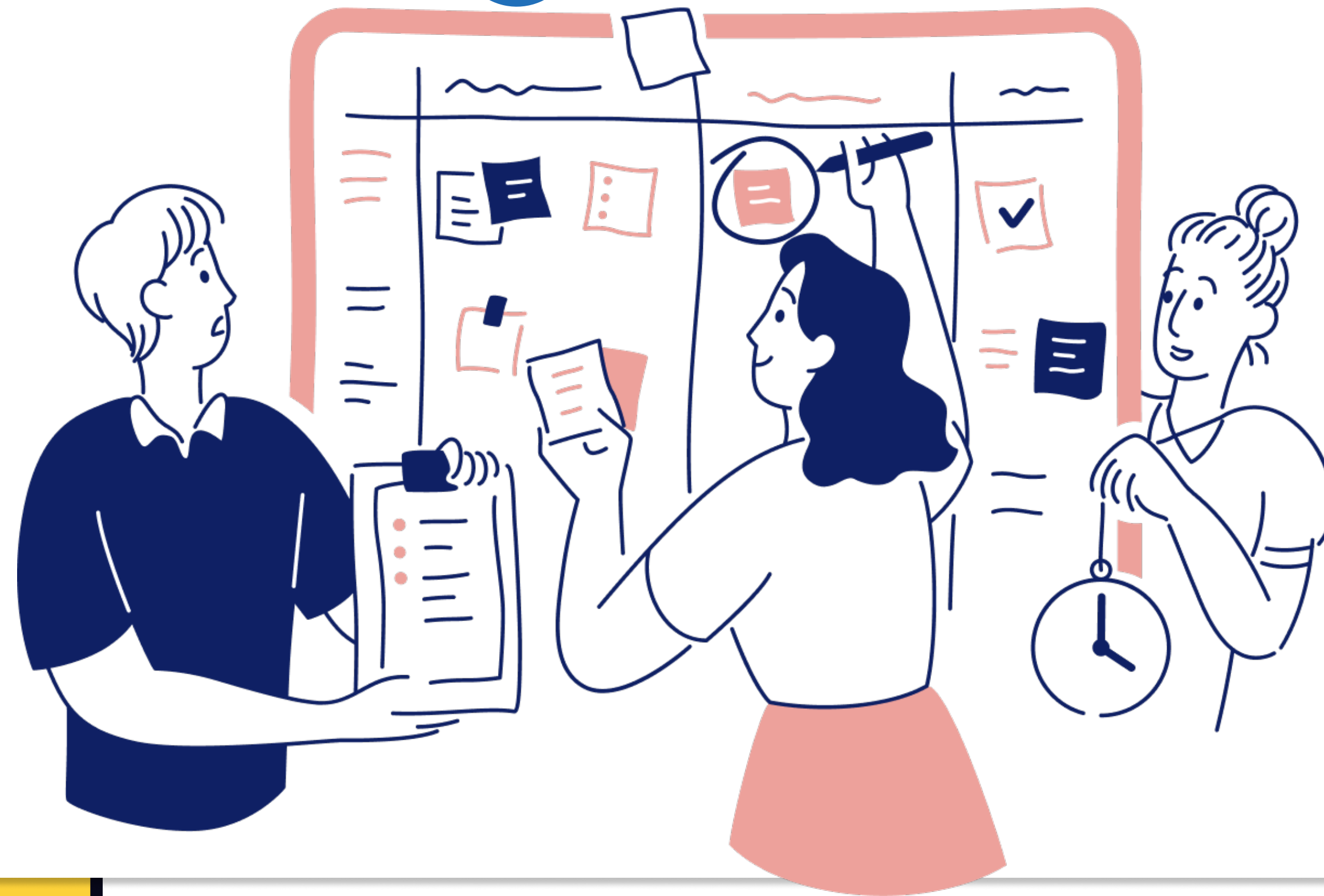
①

②

③

④

⑤



REFLECT

①

②

③

⑤

④

Iterate Note

Solicit feedback from other users:

- Content of storyboards 🗑️
- Compare/contrast 🗑️
- Next steps 🗑️

+



DELIVER

1

2

3

4

5

WELCOME



Improved design concept

--> Improvements to physical space & care experience based on input

--> updates to access to facility and check-in

--> rely on technology and disability access

--> Include others to make process inclusive and representative